

Department of
Agriculture, Fisheries and Food
An Roinn
Talmhaíochta, Iascaigh agus Bia



Comhshaol, Oidhreachta agus Rialtas Áitiúil
Environment, Heritage and Local Government

TERMS AND CONDITIONS

OF THE

BURREN FARMING FOR CONSERVATION PROGRAMME

**IMPLEMENTED BY THE MINISTER FOR AGRICULTURE,
FISHERIES AND FOOD UNDER THE PROVISIONS OF ARTICLE
68.1 (a) (i) OF COUNCIL REGULATION (EC) 73/2009**

APRIL 2010

The Burren Farming for Conservation Programme (BFCP)

1. Introduction - Farming for Conservation in the Burren

The Burren is internationally recognised for the uniqueness, wealth and diversity of its heritage. As a result, much of the Burren has been designated as part of the Natura 2000 Network under the EU Habitats Directive. These areas contain a variety of priority habitats including limestone pavements, orchid-rich grasslands and turloughs. The BurrenLIFE Project (BLP) (2005-2010) developed a new model of sustainable agriculture for the Burren to conserve and renew these habitats. A feature of the project and a key contributor to its success was the strong partnership amongst the stakeholders; the National Parks and Wildlife Service Teagasc and the Burren Irish Farmers Association. At the heart of the project was the recognition of the role that farmers and farming practices play in the conservation of habitats.

The BLP concluded in January 2010 and its successor will be the Burren Farming for Conservation Programme 2010 (hereafter referred to as the BFCP). The Minister for Agriculture, Fisheries and Food has responsibility for payments made under this Programme. A Project Team, funded by the National Parks and Wildlife Service, will be based in Carron and will implement the BFCP in consultation with the Department of Agriculture, Fisheries and Food.

2. Background to the Burren Farming for Conservation Programme 2010

Article 68.1 (a) (i) of Council Regulation (EC) 73/2009 makes provision for the use of unused Single Payment Programme funds for specific types of farming which are important for the protection or enhancement of the environment.

The funds are to be used in an environmental programme, which targets the delivery of a range of environmental benefits, in particular the production of species-rich grasslands and the improvement of water quality. This provision is ideally suited to extending and enhancing the measures pioneered by the BLP over the past five years in the Burren.

A total of up to €1 million will be made available to eligible participants in respect of each of the years - 2010, 2011 and 2012.

These detailed rules set out the eligibility criteria and general conditions (Terms and Conditions) determined by the Minister for Agriculture, Fisheries and Food for participation by selected eligible farmers in the BFCP and will be subject to review over the period of the Programme.

3. Objectives of Programme

The primary objectives of the proposed Programme are as follows;

- **To ensure the sustainable agricultural management of high nature value farmland in the Burren.**
- **To contribute to the positive management of the Burren landscape and the cultural heritage of the Burren.**
- **To contribute to improvements in water quality and water usage efficiency in the Burren region.**

4. **Eligibility**

To be eligible to participate a farmer shall:

- (i) Be aged **eighteen years** or over on date of application for support.
- (ii) Submit a **valid application under the 2010 Single Payment Scheme** and have all lands farmed declared on the Department of Agriculture, Fisheries and Food's Land Parcel Identification System (LPIS). In order to benefit from payment in 2011 and 2012 a valid SPS application must be submitted in respect of each of those years.
- (iii) Own, or lease (with a expiry date of 31 December 2014 or later), land in the Burren region (see **Appendix A**) in excess of 3 hectares in size. **Rented-in land** or **land leased-out** or **land leased-in with a lease expiry date prior to 31 December 2014** is not eligible for payment under the BFCP.
- (iv) Farm a holding which contains at least **two** grazed **Annex I habitats** as defined in the EU Habitats Directive (including, but not limited to Limestone Pavements, Limestone Heaths, Orchid-rich Grasslands, Turloughs, Semi-Natural Dry Calcareous Grasslands, Lowland Species-rich Dry Grasslands, Lowland Hay Meadows – see **Appendix B** for full listing).
- (v) Undertake to adhere to the conditions of the Programme as outlined in these Terms and Conditions and accept that failure to meet the requirements may result in forfeiture of all or part of the payment.

5. **Application process**

Applications from farmers, who meet the criteria outlined in Section 4 above, who wish to be considered for participation in the Burren Farming for Conservation Programme should be submitted to:

The Department of Agriculture, Fisheries and Food,
Single Payment Unit (Burren Farming for Conservation Programme),
Government Offices,
Old Abbeyleix Road,
Portlaoise,
Co. Laois.

The closing date for applications is 17 May 2010. Applications received after that date will be subject to late application penalties under the Terms and Conditions of the Single Payment Scheme 2010. A copy of the application form (**Form BFCP1**) can be obtained by contacting the Department at **Lo-Call Number 1890 252 235** or from the BFCP Office, Old Schoolhouse, Carron, Ennis, Co. Clare at telephone number **065-7089000** The application form and Terms and Conditions of the BFCP are also available on the following websites: www.agriculture.gov.ie or www.burrenlife.com

As the total funding available under the Programme is €1 million per annum, it will be necessary to limit the number of farmers participating in the Programme in order to ensure the effectiveness of the Programme and to ensure that the financial limit is respected. If the number of eligible applications received is greater than the number that can be accepted, all applications will be assessed and ranked according to the following criteria:

- (i) **History of participation in REPS Agri-environmental Schemes**
- (ii) **Area and proportion of designated land on holding**
- (iii) **Listed National Monuments situated on holding**
- (iv) **Proportion of total holding situated in Burren**
- (v) **Winterage management system**
- (vi) **Extent of public land being farmed**
- (vii) **Participation in BurrenLIFE Project**

All applicants will be informed as to whether or not their application has been successful.

6. Farm Plans

All *successful* applicants must draw up and submit, in consultation with a farm advisor/ consultant (see Section 13), a farm plan setting out their proposals for participation in the Programme. The farm plan will be a short document containing all the required information using a colour-coded, map-based system and will include information such as:

- an overview of the farm broken down into management units (fields) highlighting all designated areas and other priority habitats.
- a schedule of proposed works to be undertaken indicating locations, methodologies and timeframes for completion.
- field sizes (hectares) with land-use descriptions, as well as guideline recommendations on suitable grazing and feeding regimes.

Farm plans are intended to set out clearly a plan of action for the farm. As such, they will be revised on an annual basis to improve their effectiveness and to incorporate new information. An updated programme of works will be worked out every year with the farmer for inclusion in the reviewed plan.

7. Details of proposed Programme

Participants in the BFCP will not be excluded from participating in the newly launched Agri-Environment Options Scheme (AEOS). However, if farmers receive aid on any of the below-listed Measures under AEOS or REPS or any other agri-environment scheme, they will not receive further aid for that Measure under the BFCP.

Payments under the BFCP will be based on a number of factors, principally the extent and condition of the designated habitats and other non-designated Annex I habitats on the farm and the satisfactory completion by the farmer of a range of recommended site enhancement works. Payments will be made for three general measures, all of which are likely to be applicable to farmers participating in the BFCP. These measures are as follows;

- **Measure 1: Production of species-rich limestone grassland;**
- **Measure 2: Site Enhancement Works (including scrub removal);**
- **Measure 3: Protection of designated land and other areas of Annex I habitat.**

The maximum amount that will be payable to any farmer under the BFCP is €15,000 per annum.

Measure 1 The Production of species-rich limestone grasslands

This is the most important Measure under the Programme. Species-rich limestone grasslands and associated habitats are some of the rarest and most endangered habitats remaining in Europe (**Appendix C**). They are also one of the most **important habitats in the Burren, as they are home to most of the region's flowers and insects**. In most cases, these habitats require careful management through low-input winter (and in some cases late summer) grazing. In the case of meadows, late-summer cutting for hay with no chemical fertiliser or slurry applications is advocated. Without this type of management these grasslands are **very susceptible to species-loss and in some cases scrub encroachment**.

This Measure is designed to reward those who have managed their land well in the past, but also to incentivise those who may not have done so, in order that they will strive in future to improve habitat quality with resulting environmental benefits. Under this Measure, **all areas of eligible limestone grassland and associated habitats** on the farm will be mapped and assessed by a qualified farming for conservation advisor. The conservation status of the grassland habitat in each management unit (referred to henceforth as 'field') will then be scored on a scale of 0 to 10, where 0 is very poor and 10 is exemplary. Fields with a 'pass' score of 3 or more will be eligible for bonus payments under this Measure. The maximum bonus payment rates are as follows for land that receives a maximum score of 10;

0 – 40 hectares - €100 per hectare

40-80 hectares - €50 per hectare

80-120 hectares - €25 per hectare

The bonus rates payable for scores between 3 and 9 will be increased by 10% for each point increase in the classification as follows;

<u>Per hectare payment</u>	<u>Class 9</u>	<u>Class 8</u>	<u>Class 7</u>	<u>Class 6</u>	<u>Class 5</u>	<u>Class 4</u>	<u>Class 3</u>	<u>Less than Class 3</u>
0 – 40 hectares	€90	€80	€70	€60	€50	€40	€30	Nil
40-80 hectares	€45	€40	€35	€30	€25	€20	€15	Nil
80-120 hectares	€22.50	€20	€17.50	€15	€12.5	€10	€7.5	Nil

Exclusions

Fields where feeding of silage or large bales of hay takes place, or fields to which stock being fed with silage or round bales of hay have direct access, will automatically receive a score of '0' as this practice may not always be compatible with habitat conservation or groundwater quality. Where extenuating circumstances apply, a derogation from this exclusion may be sought.

If the applicant is a participant in the Agri-Environment Options Scheme, no aid will be paid under the BFCP on the hectares of species-rich limestone grassland **paid** for under that Scheme.

This Measure intends to encourage and incentivise participant farmers to improve management on all areas of limestone grassland on the farm. To focus more on areas of the farm where improved management is required it is recommended that fields with a lower conservation status 'score' (undergrazed, overgrazed, damaged etc) will be considered first for payment.

Measure 2: Site Enhancement Works

This Measure supports a range of works which will provide the necessary infrastructure to farm for conservation in an efficient and effective manner. These works, which were piloted and costed under the BurrenLIFE Project, are targeted at improving the management of areas of Annex I habitat and thereby enhancing the conservation status of these habitats. Such works include:

- Stone wall restoration and insertion of gates
- Provision of watering facilities (pipes, pumps, tanks, rainwater harvesters)
- Provision of feeding facilities (feed bins, troughs)
- Scrub removal
- Scrub re-treatment
- Installation or upgrading of vehicle access tracks
- Habitat restoration

The following conditions will apply to these payments;

- (a) Payments for works will **not** be made where the cost of these works is already covered by payments through REPS, the Agri-Environment Options Scheme or any other agri-environment scheme of which the farmer is a participant.
- (b) The payment allocated per action will only cover a proportion of the cost of these works. The farmer will meet the balance of the cost.
 - **Scrub work, stonewall work, and habitat restoration** will be **75% funded** by the Programme.
 - Durable goods (**troughs, feed bins, pumps, tanks, gates** etc) will be **50% funded**.
 - Access provision will be **25% funded** up to a maximum of €3,000 (restrictions apply).

Unit costs (per ha, per metre, etc) per action have been developed by the BLP for all of these actions. These unit costs will be used to calculate amounts of work to be done under each action within the allocation granted to that farm. Within this Measure 2 allocation (see below), what works need to be done, when, where and how, will be clearly specified in the farm plan.

Farmers should consult Best Practice Guidelines on Scrub Removal, Feeding and Grazing in order to ensure these actions are carried out successfully. All necessary permissions including written consents must be secured from the relevant authority (National Parks and Wildlife Service, National Monuments Service etc) before works are undertaken. Scrub may not be cut/removed during the nesting season (April 1st – August 31st) and will probably require a felling licence. Work must be completed by August 31st every year. Failure to secure the necessary consents or to complete the tasks successfully within the given timeframe will result in reduction or loss of payments under this Measure.

Only work undertaken on designated areas and other areas of Annex I habitat will be eligible for funding under this Measure. The only exceptions to this rule will be where particular built heritage or landscape features on other areas require site enhancement works (e.g. scrub removal from a fort or a tomb).

Guideline Rates for allocating funding under this Measure are being based on the extent of the Annex I habitat on the farm. The bands per hectare of Annex I habitats are:

0 – 40 hectares - €100 per hectare

40-80 hectares - €50 per hectare

80-120 hectares - €25 per hectare

For example, a farmer with 90 hectares of land, 70 hectares of which is Annex I habitat, would be able to earn up to €5,500 (40ha x €100 + 30ha x €50) under this Measure for undertaking a range of works which would be determined by the farm advisor and listed in the farm plan.

This allocation may be reduced in subsequent years of a plan as more of the infrastructural needs of the farm in question are met. In cases where a farmer's overall BFCP entitlement exceeds the ceiling of €15,000, requirements to complete works under Measure 2 may be reduced accordingly.

Measure 3: Protection of Designated land and other areas of Annex 1 Habitat

An area-based payment will be made for all designated areas and other areas of Annex I habitat on the farm. This includes all 'designated' habitats (mainly SACs) as well as any other Annex I habitats, on the applicant's holding. The proposed rates of aid in respect of this Measure are as follows;

- **0 - 40ha - €12 per hectare**
- **40-80ha - €24 per hectare**
- **80-120ha - €18 per hectare**

There are two main conditions applying to the payment of the aid:

- (a) No aid will be paid for designated areas of habitat if the farmer is in REPS or any other agri-environmental programme and is in receipt of a 'top-up' payment to compensate for having designated (SAC) habitats on the farm. For example, if the applicant is a participant in the Agri-Environment Options Scheme, no aid will be paid on the designated areas of habitat paid under that Scheme. However non-designated areas of priority habitat on such farms will be eligible for payment.
- (b) No aid will be paid under this Measure for management units (fields) where the feeding of silage or large bales of hay takes place on any areas of Annex I habitat or for fields where stock have direct access to areas of Annex I habitat as this practice may not always be compatible with habitat conservation or groundwater quality in the sensitive karst landscape of the Burren. Under exceptional circumstances (weather, disease etc) individual or general derogations may be granted by the BFCP Office for the feeding of silage.

8. General Requirements of Burren Farming for Conservation Programme

In order to benefit from payments under the Programme for the Measures outlined in Section 7 above, the applicant must also adhere to the following requirements.

- Ensure Cross Compliance Requirements are fully met
- Maintain land in Good Agricultural and Environmental Condition
- Follow any existing requirements under REPS, the Agri-Environment Options Scheme or any other agri-environment scheme of which the farmer is a participant
- Adhere to all rules relating to designated land (SAC notifiable actions etc.)
- Adhere to all rules relating to designated monuments
- Attend an annual local training workshop on Farming for Conservation
- Follow all management proposals listed in the BFCP Farm Plan
- Facilitate all requests relating to compliance and monitoring checks by the BFCP team and Department of Agriculture, Fisheries and Food officials

9. Compliance Checks/Inspections

The Minister for Agriculture, Fisheries and Food reserves the right to carry out inspections at reasonable times of any land, premises, plant, equipment, livestock and records of applicants/participants. On-the-spot checks will be carried out at farm level to ensure compliance with the requirements of the Programme.

Department of Agriculture, Fisheries and Food Officials and the staff at the BFCP office will conduct administrative audits of all plans submitted to ensure that the information provided is accurate (areas etc.) and in order to certify basic payments under Measure 3.

All applications for support and payment claims will be subjected to administrative checks and any other controls deemed necessary before payments are made under the Programme. Applicants shall facilitate such administrative and on the spot checks as the Department deems necessary. Applications will be cross-checked with records held by the Department.

Farm advisors will inspect and sign off on works done under the Site Enhancement Measure (Measure 2) and will also assess the condition of limestone grasslands under Measure 1. In addition, BFCP staff will also conduct random compliance audits on a percentage of farms to ensure that all works done under Measure 2 are satisfactorily completed. The BFCP Scientific Officer will also conduct checks on a proportion of limestone grassland habitats to validate the level of bonus payments which have been allocated. All of these checks will be over and above standard compliance and eligibility checks undertaken by officials from the Department of Agriculture, Fisheries and Food.

Participation in the BFCP may be terminated or payments reduced if the farmer is adjudged not to be in compliance with the conditions laid down in the farm plan. Payments may also be withheld or recovered if compliance checks identify shortcomings in the work completed or in the assessment of habitat condition. Payments will not be made where the farmer is in contravention of any of the basic programme requirements listed above.

These decisions may be appealed according to the procedures laid down by the Department of Agriculture, Fisheries and Food.

10. Training

Annual Training Workshops on Farming for Conservation will take place every year. Attendance at these Workshops is mandatory and failure to attend at least one workshop per annum will result in a reduction of 10% in amount paid for that year. To facilitate full participation, courses will be held on evenings and weekends.

Workshops will be mainly field-based and will focus on practical farming for conservation issues including:

- Identifying Annex I habitats
- Sustainable grazing regimes
- Approved feeding systems
- Best practice for wall maintenance
- Best practice for water provision
- Best practice for scrub removal

For specialist activities such as scrub removal, the BFCP Office will also supply a list of approved contractors to participating farmers.

11. Cross Compliance sanctions and other penalties

The Department of Agriculture, Fisheries and Food has primary responsibility for the implementation of cross compliance requirements laid down in EU legislation governing the Single Payment Scheme and other Direct Aid Schemes. In addition, there are also requirements relating to the correct declaration of land parcels under the Single Payment Scheme with penalties applying where either an under-declaration or over-declaration of area of land parcels is made. Applicants under the Single Payment Scheme have been sent 'Helpsheet/Terms and Conditions for the 2010 EU Single Payment Scheme' which provides the details necessary for compliance with these requirements. Penalties applicable to the Single Farm Payment due to an applicant under that Scheme will also apply under the BFCP.

Failure to comply with the Terms and Conditions of the BFCP will result in an appropriate penalty/sanction. Monetary penalties will include interest payable at the rate provided for under S.I. No 13 of 2006. Interest will be calculated for the period elapsing between the notification of the repayment obligation to the farmer and either repayment or deduction. Penalty amounts may be deducted from future payments due to the beneficiary under other EU-financed Schemes. Where monetary penalties are not paid or recovered within the period requested, the Department may take whatever action is deemed necessary for their recovery.

Intentional and serious breaches of the Programme's conditions may result in non-payment for the year in question or in the termination of participation and/or exclusion from the BFCP for a period commensurate with the seriousness of the breach, and the refund of monies already paid.

12. Appeals

In cases where penalties are applied, participants will be given ten working days after formal notification in which to appeal in writing and give reasons why any penalty imposed should not be applied. The participant will be informed of the outcome of the appeal. This is without prejudice to a participant's rights under the Agriculture Appeals Act, 2001.

13. Farm Advisors/Consultants

A panel of farm advisors/consultants will be drawn up for the purposes of the BFCP. These advisors/consultants will undergo an intensive training course on farming for conservation. Participants in the BFCP can select from this panel of advisors/consultants. Farmers will pay for the services of the advisors/consultants and this cost will be allowed for in the overall BFCP farmer payment.

Advisors/consultants will need to liaise with farmers, conduct farm audits and assemble farm plans. This will entail working closely with the farmer and advising on priority tasks, where, how and when they should be done. The farm advisor will also inspect grasslands on the farm and award them a score under Measure 1. The farm advisor will work closely with the BFCP team and the farmer and a proportion of farm plans, actions and scores will be cross-checked by the BFCP team.

14. Payments

The overall budget for this programme is €1m per annum. The Dept of Agriculture, Fisheries and Food (DAFF) will make payments directly to the farmer's bank account in accordance with single farm payment timeframes every year. All payments will be subject to Single Payment Scheme modulation rules and a ceiling of €15,000 will apply to all farms participating in the Programme. If a Programme participant also benefits from aid under the Agri-Environment Options Scheme, the total aid paid under both Schemes should not exceed €15,000. This ceiling does not apply to REPS payments.

If in any year the total payments to be made under the Programme exceed the total ceiling of €1 million, a linear reduction will be applied to all payments to ensure that the ceiling is not exceeded.

15. Further conditions

- The Minister may at any time lay down further conditions under this Programme.
- The Minister reserves the right to review and, if necessary, to terminate participation in the Programme and to seek re-imburement of aid paid where no improvement to the environment is evident.
- The Minister reserves the right to alter from time to time the procedures to be followed in the operation of the Programme.

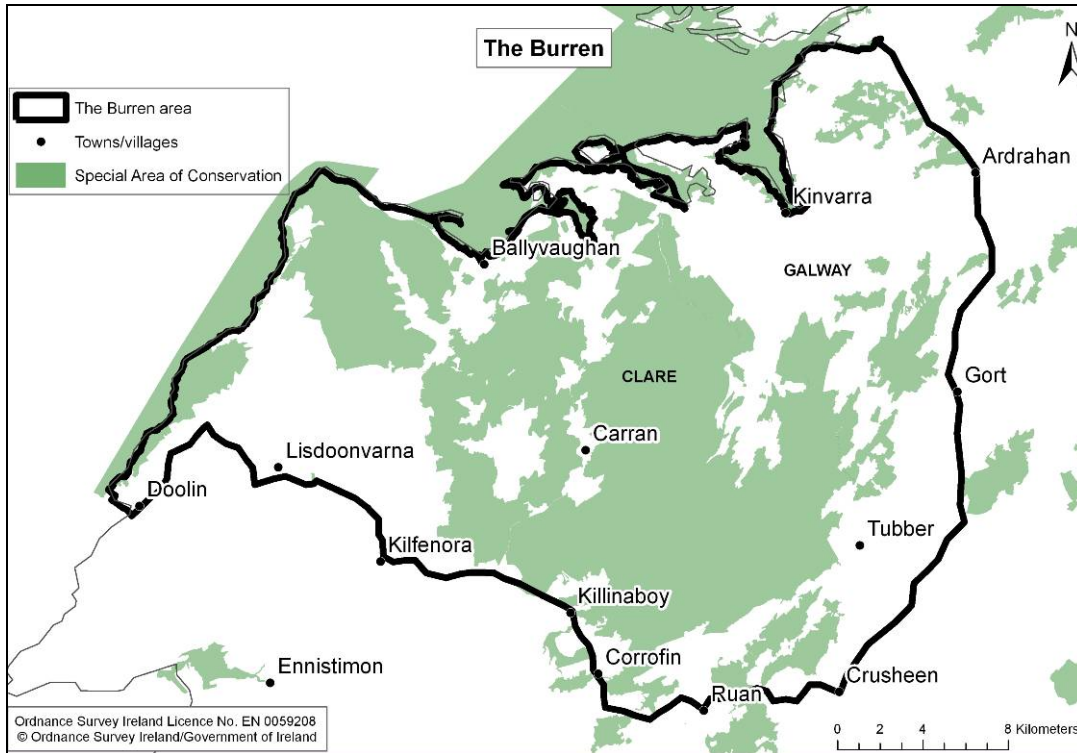
16. Conclusion

It is important to note that, while the Terms and Conditions has been prepared as an aid to applicants it should be appreciated that the governing EU Regulations (Council Regulation (EC) No 73/2009 and Commission Regulation (EC) No 1120/2009) form the definitive basis for the administration and operation of the Programme.

Department of Agriculture, Fisheries and Food
April 2010

APPENDIX A

The extent of the Burren region, as defined for the purposes of the Burren Farming for Conservation Programme, is *roughly indicated* by the solid black line on the map below:



The Burren region, as defined above, includes the following District Electoral Divisions:

Abbey	Cloghaun	Glenroe	Lisdoonvarna
Ballyeighter	Corrofin	Kilfenora	Lurraga
Beagh	Crusheen	Killeenavarra	Mountelva
Boston	Derreen	Killilagh	Muckanagh
Cahermore	Doorus	Killinaboy	Noughaval
Carran	Drumacoo	Killinny	Oughtmama
Castletaylor	Drumcreehy	Kiltartan	Rathborney
Castletown	Gleninagh	Kinvarra	Ruan

Special Area of Conservation (SAC) & Special Protection Area (SPA) designations in the Burren include:

SAC 000019 - Ballyogan Lough	SAC 000606 - Lough Fingall Complex
SAC 000020 - Black Head-Poulsallagh Complex	SAC 001926 - East Burren Complex
SAC 000032 - Dromore Woods & Loughs	SAC 002244 - Ardrahan Grassland
SAC 000054 - Moneen Mountain	SAC 002294 - Cahermore Turlough
SAC 000057 - Moyree River System	SAC 002295 - Ballinduff Turlough
SAC 000238 - Caherglassaun Turlough	
SAC 000252 - Coole-Garryland Complex	SPA 004107 - Coole-Garryland

If a farmer owns/leases land on or near the boundary indicated above, and meets the other eligibility criteria (section 4 of the Terms and Conditions), this farmer may apply for inclusion in the BFCP.

APPENDIX B

The habitats listed below are those included in Annex 1 of the EU Habitats Directive which are grazed or used by domestic livestock.

Dry calcareous (limestone) grassland & orchid-rich limestone grasslands. (<i>Corresponding Annex 1 Habitat: 6210</i>)	Widespread in the Burren, these include unimproved or semi-improved dry grasslands on thin soils that are rich in calcium. They are normally species-rich with an abundance of orchids as well as classic 'Burren' species such as spring gentians, mountain avens and bloody cranesbill.
Lowland hay meadows (<i>Corresponding Annex 1 Habitat: 6510</i>)	Unimproved or semi-improved species-rich grasslands on low to moderately fertile deeper soils that are, or were, cut for hay. Many used only for grazing in recent years.
Limestone heaths (<i>Corresponding Annex 1 Habitat: 4060 & 4030</i>)	Found on both thin, rocky, well-drained, lime-rich soils and deeper soils with poorer drainage. Characterised by at least 25% of the plant cover consisting of small woody plants. The commonest of these are ling heather and mountain avens. Also includes rare alpine heaths characterised by crowberry and bearberry.
Limestone pavement (both open or with scrub/woodland cover) (<i>Corresponding Annex 1 Habitat: 824</i>)	Consists of blocks of limestone known as 'clints' separated by fissures called 'grikes'. Usually contains patches of limestone grassland & heath. Often includes areas of scrub or woodland.
Juniper scrub	In the Burren, juniper scrub is usually found in association with limestone grassland, heath and pavement.
Turlough (<i>Corresponding Annex 1 Habitat: 3180</i>)	Depressions in limestone areas that flood intermittently usually because of changes in groundwater levels. They normally fill through underground springs and swallow holes. Water levels fluctuate markedly during the year, generally flooding in winter and drying out during the summer months.
Calcareous & alkaline fens (<i>Corresponding Annex 1 Habitat: 7210 & 7230</i>)	Fens are found in association with the springs, turloughs and lakes of the Burren. Fed by lime-rich waters they contain a variety of plants including black bog rush and many sedge species.
Petrifying & calcareous springs (<i>Corresponding Annex 1 Habitat: 7220</i>)	Upwellings of lime-rich groundwater or seepage from the limestone. Areas of wetland vegetation are associated with the springs. Tufa formation and marl deposition occur in a relatively small number of the Burren springs and these are said to be 'petrifying'.
Atlantic hazel wood	Although not an EU Annex 1 habitat, Atlantic hazel woods are very rare in Europe and merit special attention. They contain mature hazel trees that are covered in lichens and/or mosses.

APPENDIX C

The term 'species-rich limestone grassland and associated habitats' used in Measure 1 is taken to include areas of calcareous grassland, orchid-rich grassland, limestone heath, lowland hay meadows, grazed (vegetated) limestone pavement and turloughs as outlined in Appendix B above.